



FALL
1955

Swayne's Gardens

SUCCESSOR to O. M. PUDOR

34th Year

PUYALLUP, WASHINGTON

P. O. Box 109

9th Street S. W. at Pear Street

BULBS

Spring flowering bulbs from the Puyallup Valley, the Bulb Capital of America. The home of the spectacular "Daffodil Parade" and the gorgeous fields of tulips which you have seen featured in national magazines.

Daffodils

DAFFODIL CULTURE

Daffodils thrive in any well-drained garden soil. They should be planted about 10 in. deep for the large bulbs, but the varieties which make small bulbs of course should not go in quite so deep. The soil should be prepared 6 in. below the bulbs—mix bone meal into the soil, but do not let any manure come in contact with the bulbs.

Daffodils look best planted in groups or drifts, with the bulbs placed 4 to 6 in. apart. They should be planted in early Sept. and in cold climates a mulch of leaves or straw after the ground has frozen is a good protection. The bulbs should be dug and divided every 2 or 3 years; digging the bulbs when the foliage is turning yellow, and lays on the ground. They may be replanted at once, or kept in storage until fall. Do not dig them in the fall.

Daffodils used for naturalizing in the grass or under trees need not be disturbed for years.

Do not water daffodils in the **summer** when they are dormant.

Varieties listed here are numbered (1 to 6) according to their time of blooming.

Division I

Trumpet Narcissi. One flower to a stem, and the trumpet or corona is longer than the perianth, or petals.

ADVANCE GUARD. (1) Intense deep golden-yellow throughout; mouth of trumpet is heavily crinkled and lacinated and of remarkable texture, remaining in fine condition for an unbelievable length of time. Has long stems, short neck and looks you in the eye. **Each 30c; 3 for 80c; doz. \$3.00.**

AEROLITE. (1) The large flower is beautifully proportioned, giving the impression of gracefulness, despite its size; perianth deep primrose, with a pure yellow trumpet which is left in bold relief by the broad pointed star formed by the flat opening outer petals, an inch and a half wide. A splendid keeper either in the garden or after being cut. **Each 20c; 3 for 50c; doz. \$2.00.**

BEN HUR. (2) A glorious "loud speaker" trumpet, deeply frilled of pure Roman Gold, 2½ inches across at the mouth; in spite of its immense size the whole flower is finely proportioned. **Each 25c; 3 for 70c; doz. \$2.50.**

COMMANDER-IN-CHIEF. (2) A very large flower of deep golden yellow. The heavily lacinated trumpet is a little darker in color than the perianth. **Each 30c; 3 for 80c; doz. \$3.00.**

DIOTIMA. (1) Considered by many to be the best of the super-giant yellow trumpets. The flower is beautifully proportioned and is carried gracefully on tapering stems, two feet tall. The broad overlapping petals form a star-shaped perianth of medium deep primrose, five to six inches across; trumpet slightly deeper in color. One of the top-notchers. **Each 30c; 3 for 80c; doz. \$3.00.**

GOLDEN HARVEST. (1) Deep golden yellow trumpets; overlapping perianth of clear yellow. One of the largest trumpets in existence. A giant among giants. Blooms about five days earlier than King Alfred; excellent for forcing, especially for pots. **Each 25c; 3 for 70c; doz. \$2.50.**

KING ALFRED. (1) A deep golden yellow flower of wonderful substance, on stiff two-foot stems. Trumpet deeply frilled and recurved at the mouth. By far the best all-yellow in its price class. The universal favorite for cut flowers. Produces wonderful, large, hard bulbs. **Each 15c; 3 for 40c; doz. \$1.50.**

LORD WELLINGTON. (2) One of the most beautiful of the all-yellow trumpet Daffodils. The enormous flowers are carried on tall stiff stems; are larger than King Alfred and of rich golden yellow thruout. foliage is wide and stiff. One of the most satisfactory for garden display or cutting. **Each 25c; 3 for 70c; doz. \$2.50.**

MAGNIFICENCE. (1) One of the earliest of the new yellow trumpets. Flowers are of the deepest golden-yellow, perianth of decorative outline, trumpet is widely expanded with a serrated brim. A valuable addition for the southern cut flower grower. **Each 15c; 3 for 40c; doz. \$1.50.**

ROBINHOOD. (2) The flat perianth is of light yellow; trumpet of deep orange yellow. Distinct and outstanding, the nearest yet to an orange long trumpet Daffodil. **Each 20c; 3 for 50c; doz. \$2.00.**

UNSURPASSABLE. (2) A golden yellow of perfect form and wonderful texture. One of the best. **Each 30c; 3 for 85c; Doz. \$3.00.**

VAN WAVEREN'S GIANT. (2) Enormous flower with deep yellow trumpet, well opened; perianth of yellowish-white; outer petals are exceptionally broad and the inner ones usually slightly twisted, making the flower more graceful. **Each 25c; 3 for 70c; doz. \$2.50.**

WILLIAM MENGELBERG. A new, huge, golden yellow trumpet. Very heavy substance and a robust grower. Excellent for cutting. **Each 45c; 3 for \$1.20; Doz. \$4.50.**

WILLIAM THE SILENT. A new giant pure yellow daffodil. The perfectly shaped trumpet is deeply frilled, and the broad overlapping perianth is of wonderful substance. Grows on tall, strong stems. Truly a magnificent variety. **Each 30c; 3 for 85c; doz. \$3.00.**

BI-COLOR TRUMPETS

PRESIDENT LEBRUN. (3) A beautiful show variety. The bone white perianth is large and overlapping; refined deep yellow trumpet with a slight tinge of orange. **Each 25c; 3 for 70c; doz. \$2.50.**

QUEEN OF THE BI-COLORS. (1) A large, bold trumpet of deep golden yellow. The thick leathery perianth is pure white, but the color from the trumpet runs into it. **Each 20; 3 for 55c doz. \$2.00.**

WHITE TRUMPETS

BEERSHEBA. (2) A truly magnificent flower, all white, nearly five inches across. The large perfectly flat perianth and long, beautifully flanged trumpet makes this the perfect show flower. A flower of fine form, stately carriage and remarkable substance, keeping for weeks. A cold climate seems to add to its vigor. Beersheba will hold its own at any flower show, in any country. Many impressive awards. **Each 35c; 3 for 95c; doz. \$3.50.**

JULES VERNE. A lovely giant. Perianth is pure white and the trumpet Primrose, becoming almost white as the flower ages. It is the earliest of this type to bloom and is a wonderful keeper that should be in every garden. **Each 50c 3 for \$1.40; doz. \$5.00.**

MOUNT HOOD. An outstanding new variety with an overlapping pure white perianth

of wonderful substance. The creamy white trumpet changes to pure white when in full bloom. **Each 40c; 3 for \$1.15; doz. \$4.00.**

MRS. E. H. KRELAGE. (2) Often described as the "White King Alfred". Perianth pure white; trumpet opens pale lemon and turns creamy white, nicely recurved at the mouth. **Each 20c; 3 for 50c; doz. \$2.00.**

ROMAINE. (2) Very large bloom of heavy substance and a robust grower. The wide, imbricated trumpet opens pale lemon yellow and becomes ivory—petals are pure white. **Each 25c; 3 for 70c; doz. \$2.50.**

ROXANE. (2) This flower immediately catches the eye of those who see it growing in the field. Pure white overlapping perianth with large trumpet of cream white, frilled and lacinated at the mouth. A plant of strong constitution, flowers standing erect on strong stems. The very wide foliage sets the flowers off to perfection. **Each 30c; 3 for 80c; doz. \$3.00.**

PINK TRUMPETS

LOVENEST. (2) This among the daintiest of all trumpets; perianth is white, star-shaped and overlapping. The lemon trumpet is nicely recurved and gradually turns white as the flower develops; the mouth of the trumpet turning a delicate shell-pink, the pink being more pronounced in cool climates. A splendid keeper. Highly recommended for garden display or as a cut flower; a most unusual item for forcing in pots in a cool greenhouse. **Each 25c; 3 for 70c; doz. \$2.50.**

MRS. R. O. BACKHOUSE. (4) This is the famous "Pink Trumpet Daffodil." Fine informal perianth of ivory white, and beautifully proportioned; slim long trumpet of apricot pink turning to a deeper pink at the deeply fringed edge. Delicately beautiful but of exceptional substance; long lasting; belongs in every collection. **Each 25c; 3 for 70c; doz. \$2.50.**

PINK RIM. A lovely creamy-white cup with a rich picotee pink edge. The perianth is pure white. One of the finest of the Pinks. **Each 50c; 3 for \$1.40; doz. \$5.00.**

Division II

LARGE CUPPED NARCISSI

One flower to a stem, with the cup, or corona more than one-third, but less than equal to the length of the petals.

ANNY VIRGINIA. A cup of fiery orange, set

off by a perianth of pure gold. A large flower of wonderful form and very good substance. Each 60c; 3 for \$1.70; doz. \$6.00.

BIARLITTA. (3) Flat, overlapping perianth of soft golden-yellow. The rich, reddish-orange cup is wide and flat. Tall grower, of fine form. Each 25c; 3 for 70c; doz. \$2.50.

BODILLY. (3) The petals of the glistening white perianth are well overlapped, and the cup is clear, lemon yellow. Each 35c; 3 for 90c; doz. \$3.50.

CARLTON. (3) A fine clear yellow self-color of great size. Flat overlapping perianth and large expanded crown frilled at brim; a magnificent plant of great vigor. Each 20c; 3 for 50c; doz. \$2.00.

CARMENCITA. (3) The large overlapping perianth is a charming tint of pale apricot; large expanded much frilled crown of deep orange-scarlet. Long stems with flowers far above the foliage, extremely showy. Each 35c 3 for 95c; doz. \$3.50.

CENTRAL PARK. (3) Large flower of fine substance on tall stiff stems that are six to eight inches above the foliage. Perianth of cream-white, slightly reflexed. The expanded cup is orange-red, the color running into the perianth as in Francisca Drake. Highly recommended. Each 40c; 3 for \$1.10; doz. \$4.00.

COVERACK GEM. (3) The milk-white perianth is large and overlapping; the large flat, deep yellow cup is broadly edged brilliant orange red. Each 35c; 3 for 95c; doz. \$3.50.

CARBINEER. (3) A beautiful flower of good substance, and fine lasting qualities. Broad flat golden yellow perianth, and a large bright orange cup. Each 30c; 3 for 80c doz. \$3.00.

DAISY SCHAFFER. (3) One of the most outstanding of the new Giant Leedsii type, the flower 4½ inches across, with cup nearly 2 inches, resembles a Giant Trumpet, but much more graceful in form; perianth pure white with cup opening primrose and turning to light canary-yellow. Long, lemon-yellow stigma and styles add to the color harmony of this remarkable flower. Ea. 30c; 3 for 80c; doz. \$3.00

DICK WELLBAND. (3) One of the finest in class, a strong grower and very free flowering. Perianth is pure white and the cup flame orange. The color does not fade but rather intensifies with age. Its great beauty lies in the startling contrast between petals and cup which makes it

stand out in the largest collection of Daffodils. Truly a fine exhibition flower, splendid keeper. Each 25c; 3 for 70c; doz. \$2.50.

DORIS. (4) A lovely flower with a white perianth and yellow frilled cup. A tall grower and excellent cut flower. Each 20c; 3 for 50c; doz. \$2.00.

ERIE (3) Cup of deepest flaming orange, and an orange-yellow perianth which appears to have some of the color of the perianth blended into it. The stems are tall and strong. Each 25c; 3 for 70c; doz. \$2.50.

FEDORA. A fine flower with a large, flat overlapping, creamy-white perianth. The imbricated cup is yellow-orange with a darker margin. Very good texture. Each 25c; 3 for 70c; doz. \$2.50.

FRANCISCA DRAKE. (3) An unusual flower of rare beauty. Perianth of silvery-white, tinted gold at the base, which shows through on the outside; cup wide and deep, is golden-yellow at the base changing to flame-orange at the densely frilled edge. Tall stems with flowers far above foliage. Highly recommended for garden display and cutting; an ideal subject for pot culture in the greenhouse. Each 20c; 3 for 55c; doz. \$2.00.

FORTUNE. (1) Broad creamy yellow perianth of very solid texture; crown of great size and elegant form, beautifully frilled, of a glowing soft orange. A giant of perfect form and strong constitution. Each 25c; 3 for 70c; doz. \$2.50.

GEN. SJOEKOF. (3) The pure white perianth is overlapping and of good substance. The wide flat bowl is deep yellow at the base becoming deepest orange at the frilled edge. An especially lovely variety. Each 35c; 3 for 95c; doz. \$3.50.

HADES. (4) The wide expanded cup is deep cherry-red, probably the deepest and darkest vivid red in daffodils. The color last exceptionally well. The large perianth is creamy-white; a strong vigorous variety. Each 20c; 3 for 55c; doz. \$2.00.

JOHN EVELYN. (3) An outstanding favorite in the Daffodil world. Large pure white perianth opens perfectly flat and is four to five inches across. The large flat cup of lemon yellow is densely frilled or shirred to the base. A flower of most refined appearance. Unexcelled for either garden display or the show bench. Each 20c; 3 for 55c; doz. \$2.00.

MATA HARI. (2) A large flower with pure white petals and a wide open bowl of clear apricot. A tall grower. Each 30c; 3 for 80c; doz. \$3.00.

- PAPILLON.** A tall new variety that is distinctly different. Round snow-white overlapping perianth. The medium sized cup is interestingly frilled and of 3 colors, yellow, white and apricot. Each 60c; 3 for \$1.65; doz. \$6.00.
- PENQUITE.** (2) The clear, yellow perianth sets off the short deep orange cup. A flower of fine form. Each 25c; 3 for 70c; doz. \$2.50.
- POLINDRA.** A fine variety of excellent form. The perianth is pure white and the wide open cup is a deep lemon-yellow. Each 65c; 3 for \$1.80; doz. \$6.50.
- PORTHILLY.** (4) Large and tall, of beautiful form and quality. Broad, smooth, clear yellow perianth; the open cup is beautifully frilled and of the most amazing deep intensely vivid orange-crimson, a really marvelous color. Each 25c; 3 for 70c; doz. \$2.50.
- REGINALD DIXON.** A beautiful variety. The round flat overlapping perianth is of a lovely shade of chrome yellow. The cup is very wide and of the same color as the perianth, but edged with flame-orange. Each 35c; 3 for 90c; doz. \$3.50.
- SCARLET ELEGANCE.** (1) A flower of unusual color and rare beauty. Brilliant deep yellow, overlapping perianth, cup of bright orange red. Color does not fade out, extremely showy. Each 20c; 3 for 55c; doz. \$2.00.
- SCARLET LEADER.** (3) Very large quite early flower with rounded cream colored perianth segment; a most striking very large, nearly flat, orange-scarlet frilled cup. Certainly one of the most striking of Daffodils. Each 25c; 3 for 70c; doz. \$2.50.
- SONJA.** (3). Large cream overlapping perianth, with a conspicuous large, flat orange-red cup of which the edges are slightly frilled. Tall stems far above foliage. A flower that stands out in any fine collection, is wanted by all who see it in bloom. One of the finest in this class and highly recommended. Each 25c; 3 for 70c; doz. \$2.50.
- SPENCER TRACY.** A beautiful new variety. The rounded, snow-white perianth is overlapping, and the frilled and lacinated bowl is of a deep orange-scarlet color. A showy flower of wonderful substance. Each 75c; 3 for \$2.05; doz. \$7.50
- SUDA.** A distinctively lovely flower. The well-formed perianth is pure white and the bell-shaped trumpet is a pale amber color. Each 30c; 3 for 80c; doz. \$3.00.
- SUNKIST.** (3) Very large, well formed, flat, pure white perianth; straight cup of bril-

liant orange. A beautiful show flower on tall strong stems; highly recommended. Each 45c; 3 for \$1.20 doz. \$4.50.

SUNNY GIRL (2). The deep orange cup against a glistening white perianth makes a striking color combination. The strong stems hold the flower well above the foliage. Each 20c; 3 for 50c; doz. \$2.00.

TENEDOS. (3) Giant Leedsii with pure white perianth and large straight trumpet of pale yellow, passing to almost white. Cup or trumpet is almost long enough to put this one in the "White Long Trumpet" division. Each 50c; 3 for \$1.40; doz. \$5.00.

TUNIS. (3) Broad white perianth and large bold, expanded ivory crown, which has a frill of pale coppery gold at the edge. A tall robust grower of fine substance. Most distinct and quite out of the ordinary. A F.C.C. and several Awards of Merit. Each 25c; 3 for 70c; doz. \$2.50.

Division III

SMALL CUPPED NARCISSI

One flower to a stem; cup or corona not more than one-third the length of the petals.

ARANJUEZ. (4) A magnificent flower and winner of many awards. The flat, overlapping perianth is of light yellow, and the large, deep-yellow cup has a margin of orange-red. Each 40c; 3 for \$1.10; doz. \$4.00.

CAROLINA. (5) Very large, perfect formed, overlapping perianth of pure white. The flat cup is intense orange and beautifully frilled at the mouth. Long strong stems, most imposing. Each 20c; 3 for 50c; doz. \$2.00.

CHENVER. (5) This variety closely resembles the Poeticus. The petals are pure white and the crown yellow, with a margin of red. Each 25c; 3 for 70c; doz. \$2.50.

EDWARD BUXTON. (3) The beautiful, flat perianth is of citron-yellow and the orange-red cup becomes yellow at the base. A tall, striking grower. Each 25c; 3 for 70c; doz. \$2.50.

EMERALD EYE. A pure white perianth with tall, striking grower. Each 25c; 3 for 70c; doz. \$2.50.

LADY KESTIVEN. (3) An outstanding narcissi. The pure white perianth is well formed and of great substance, and the cup is the deepest red ever seen in a daffodil. One of the loveliest varieties. Each 40c; 3 for \$1.10; doz. \$4.00.

THERAPIA. (4) The white perianth is large and rounded, and the flat crown is an orange color. A very striking flower. Each 45c; 3 for \$1.25; doz. \$4.50.

Division IV

DOUBLE NARCISSI

CHEERFULNESS. (5) Clusters of creamy white flowers on tall stems; very fragrant, long lasting. See Poetaz types. **Each 15c; 3 for 40c; doz. \$1.50.**

DAPHNE. (5) A pure white double Poeticus, Camellia-type. Of exquisite beauty. Fragrant. Even appeals to those who do not care for doubles. **Each 25c; 3 for 70c; doz. \$2.50.**

INSULINDE. (2) Creamy white outer petals of wonderful texture; inner petals of intense orange scarlet. A very attractive and striking novelty, outstanding on the show bench. **Each 25c; 3 for 70c; doz. \$2.50.**

IRENE COPELAND. (3) Large full double, snow-white with shorter petals of pale lemon. Lovely and distinct, strong stem, highly recommended. **Each 25c; 3 for 70c; doz. \$2.50.**

MAE WEST. (2) (Gold Eagle). Large, all yellow, not too double; petals beautifully arranged. Splendid for growing in pots. **Each 20c; 3 for 55c; doz. \$2.00.**

MARY COPELAND. (4) One of the famous varieties of the new semi-double type, this variety has been termed the most striking double in cultivation; the longer petals are pure cream white, interspersed with shorter petals of lemon and brilliant orange. **Each 25c; 3 for 70c; doz. \$2.50.**

TEXAS. (4) Very large, full double. Golden yellow and deep orange petals in alternate layers. Flowers are often 4 inches in diameter and carried on fine, long stems. **Each 25c; 3 for 70c doz. \$2.50.**

TWINK. (2) Of the semi-double type; alternating petals of primrose and clear orange and so arranged as to give the flower a most attractive appearance. A novelty of merit that attracts instant attention wherever seen. **Each 20c; 3 for 50c; doz. \$2.00.**

YELLOW CHEERFULNESS. A sport of Cheerfulness with the same lovely clusters of fragrant flowers. **Each 25c; 3 for 70c; doz. \$2.50.**

Division V

TRIANDUS NARCISSI

Flowers are more or less drooping, of elegant form and graceful habit.

AGNES HARVEY. (4) A most dainty all white Daffodil of drooping habit, one to three flowers on a stem. Starry perianth with Triandrus type trumpet. Splendid for naturalizing. **Each 20c; 3 for 55c; doz. \$2.00.**

SILVER CHIMES. (4) One of the prettiest of the small cupped Triandrus hybrids. Produces beautiful, fragrant clusters of six or more flowers carried on strong erect stems. Pure white perianth and pale primrose cup. Very vigorous grower. Increases rapidly. Not perfectly hardy, recommended only for mild climates. **Each 70c; 3 for \$2.00 doz. \$7.00.**

SHOT SILK. (4) A charming De Graaff Hybrid similar to Thalia, flowers have more substance and it is a splendid grower. The star-shaped, creamy white flowers are usually three on a stem. Very good looking, undoubtedly the finest in this class, one that is sure to appeal to all lovers of the smaller types. **Each 25c; 3 for 70c; doz. \$2.50.**

THALIA. (3) An exquisite flower of unusually pleasant appearance; three to four pure white flowers on one stem. Often described as the "Orchid Narcissus." Thalia is sold to almost all flower lovers that see it in bloom here at the farm. Ideal in every way, especially for corsages. **Each 30c; 3 for 85c; doz. \$3.00.**

Division VI

CYCLAMINEUS NARCISSI

Trumpets tube-like and perianth reflexed as in a cyclamen.

BERYL. Dainty reflexed perianth of light primrose yellow with a short, globular cup of pale orange, edged with deep orange. A great favorite. **Each 20c; 3 for 50c; doz. \$2.00.**

FEBRUARY GOLD. (1) Perianth golden yellow and reflexed as in a Cyclamen. Trumpet bright clear yellow, fringed at the edge. **Each 20c; 3 for 55c; doz. \$2.00.**

Division VII

JONQUINNA NARCISSI

More than one flower to a stem, rich color, and good form and substance.

GENERAL PERSHING. (1) A new type of Jonquil hybrid; large as some of the moderately sized trumpet Daffodils. Flower is much more refined in form than the Giant Trumpets, $3\frac{1}{2}$ inches in diameter, of purest jonquil gold, with long strong stems; very lasting. A beauty for the show bench. **Each 30c; 3 for 85c; doz. \$3.00.**

GOLDEN PERFECTION. (3) One of the finest of all the Daffodil family. Two flowers nearly four inches across carried on a very heavy, tall stem. Perfect overlapping perianth of deep citron-yellow, with a mica sheen; finely proportioned cup of pure gold. Unique in its class and one I highly recommend. Produces very large bulbs, is often catalogued as a Poetaz, which is incorrect. Each 25c; 3 for 70c; doz. \$2.50.

JONQUILLA CITRINUM. (6) A rare lemon colored form of Jonquilla Simplex, flowering later and somewhat taller. Has a most delightful fragrance and is distinctly different. Each 20c; 3 for 50c; doz. \$2.00.

JONQUILLA SIMPLEX. (3) The original sweet scented, single Jonquils; three to five charming rich yellow flowers to the stem. A gem for the rockery; produces very tiny bulbs which can be left undisturbed for years. 3 for 30c; doz. \$1.00.

LANARTH. (1) A new hybrid that is very beautiful and distinct. The broad rounded perianth is of rich golden yellow, the cup is very shallow and of a lovely golden orange. Flowers are carried on very long stiff stems. Many impressive awards. Each 25c; 3 for 70c; doz. \$2.50.

ODORUS CAMPERNELLI. (1) Rich yellow fragrant flowers, two to four on a stem. Erect rush-like foliage, very effective massed in beds or borders. 3 for 40c; doz. \$1.50.

ODORUS CAMPERNELLI PLENUS. (1) Fragrant double yellow flowers, resembles a small yellow rose. Usually two or three to a stem. 3 for 40c; doz. \$1.50.

TREVITHIAN. (3) The large broad perianth is smooth and overlapping; cup is shallow; both of lemon yellow. Two or more flowers on fine strong stems. Several awards and a First Class Certificate from the Royal Horticultural Society. 3 for 40c; doz. \$1.50.

WHITE WEDGEWOOD. A most unusual variety with 2 or 3 creamy white blooms on a stem. Each 30c; 3 for 80c; doz. \$3.00.

Division VIII

POETAZ; TAZETTA NARCISSI

Bear their flowers in clusters and are usually very fragrant.

CRAGFORD. Snow-white perianth with a dark orange eye. It produces 3 or more flowers to a stem, and will bloom in a bowl with pebbles, or in a hyacinth vase. Each 30c; 3 for 85c; doz. \$3.00.

GERANIUM. (4) Three to 6 flowers to the stem; large pure white perianth with

beautiful orange-red cup. The outstanding show flower of this type. 3 for 40c; doz. \$1.50.

LA FIANCEE. (3) Flowers are large and well placed on long stems. The flat cup of rich tangerine orange is set off by a large overlapping perianth of pure white. One of the finest for forcing. 3 for 40c; doz. \$1.50.

LAURENS KOSTER. (3) Creamy white perianth and lemon-yellow cup, usually 5 to 7 on a stem. An old standby and the best white Poetaz for forcing. 3 for 40c doz. \$1.50.

MARTHA WASHINGTON. (4) Almost twice the size of the other Poetaz. The white perianth is rounded and overlapping, and the crown is bright orange. It carries 2 and 3 flowers on a stem. Each 35c; 3 for 95c; doz. \$3.50.

ST. PATRICK. (3) A narcissus Tridymus hybrid, rediscovered in an old garden in Oregon after it had been lost in England. Four to five flowers on a stem, star-shaped, light yellow perianth, darker cup. Height 6 inches. A most attractive flower for the rock garden. Each 25c; 3 for 70c; doz. \$2.50.

SCARLET GEM. (3) Primrose-yellow perianth and brilliant orange scarlet cup; four or five flowers to the stem. Many impressive awards for forcing and as a show flower. 3 for 40c; doz. \$1.50.

WINTER PRIDE. (2) Creamy white with a yellow cup. The flowers are quite large and fewer to a stem than some of this group. 3 for 40c; doz. \$1.50.

Division IX

POETICUS NARCISSI

Perianths are purest white, cups small and flat with yellowish eye, edged scarlet; are very sweet scented.

ACTAEA. (4) The largest Poeticus and a most beautiful exhibition flower. Broad snow white perianth of great substance and good form. The very large eye is margined with dark red. Each 20c; 3 for 55c; doz. \$2.00.

RECURVUS. (6) The old Pheasant's Eye Narcissus, and still popular. Perianth is slightly reflexed. Fine for massing in borders or grass. 3 for 40c; doz. \$1.50.

Polyanthus Narcissus

These make lovely indoor decorations grown in water with pebbles.

PAPER WHITES. Pure white clusters of lovely flowers with a delicious fragrance. 3 for 55c; doz. \$2.00.

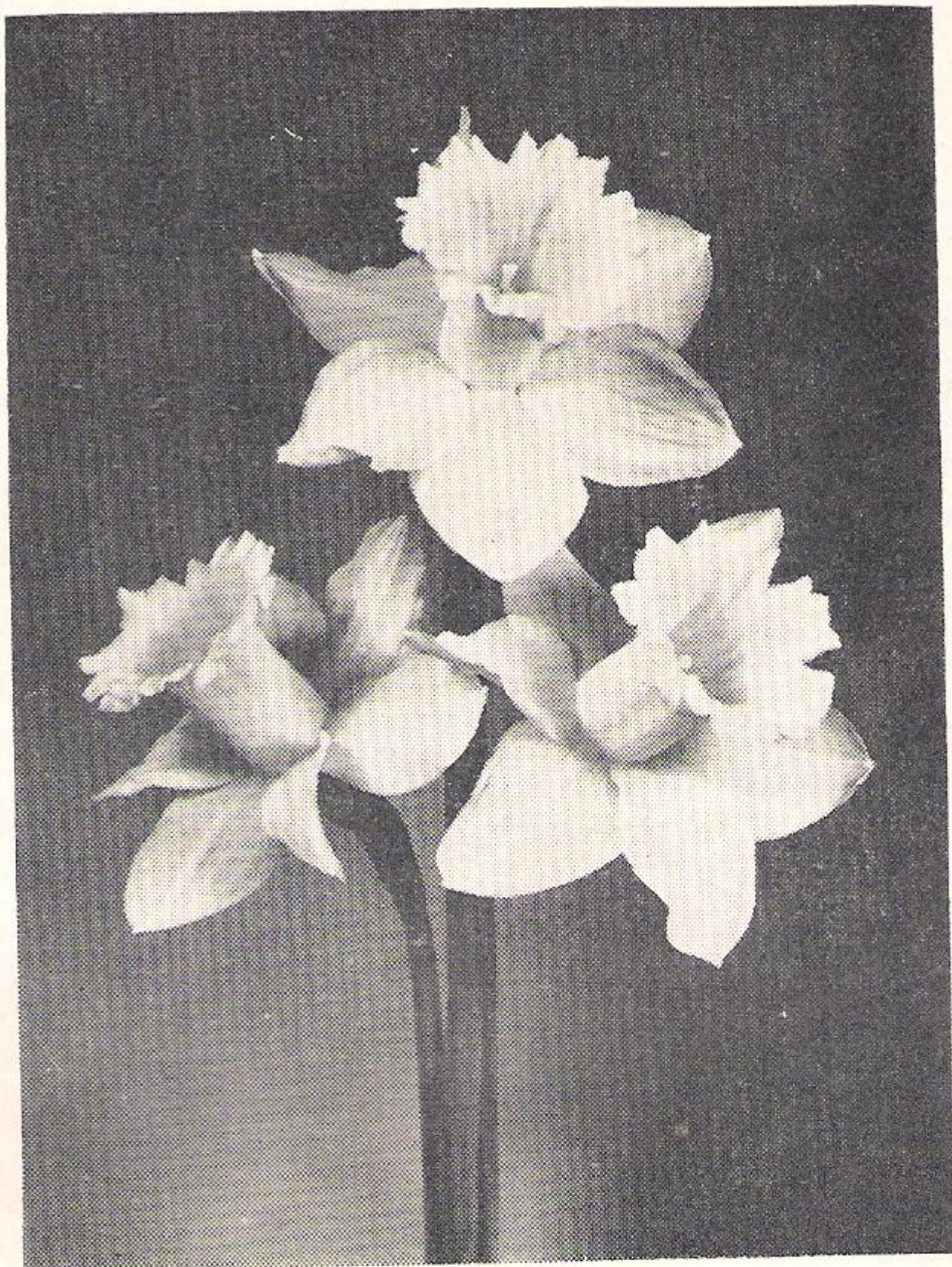
SOLEIL D'OR. The yellow Paper White. 3 for 55c; doz. \$2.00.

MIXED DAFFODILS

ALL TYPES MIXED. This mixture is hand selected and contains a great many types, and varieties; from the deep yellows to whites, early and late blooming. Makes a beautiful display. 3 for 40c; Doz. \$1.50; 100 for \$14.50.

ALL YELLOW MIXED. These are mostly trumpet daffodils; both early and late colors. A fine mixture for those who feel that a daffodil should be yellow trumpet. 3 for 40c; Doz. \$1.50; 100 for \$14.50.

NOVELTY MIXED. This mixture is made up of the newer, higher priced varieties, and often times contains bulbs of the choicest daffodils. 3 for 50c; Doz. \$2.00; 100 \$19.50.



Mixed Darwin and Mayflowering Tulips

This mixture contains a fine selection of colors,, from the earlier to the latest blooming. They will make a dazzling display in your garden. Wonderful for cutting.

No. 1: Top size (12) cm.) per doz. \$1.00. per hundred, \$8.00; per thousand, \$72.50.

No. 2: Second size, per doz. 70c; per hundred, \$5.50; per thousand, \$50.00. .250 bulbs at the thousand rate.)

3 Unbelievable Daffodil Collections

Trumpet Daffodil Collection

No. 22-D

For those who prefer the trumpet type daffodil.

WM. THE SILENT KING ALFRED PRES. LEBRUN
BEERSHEBA MRS. R. O. BACKHOUSE ROMAINE

Three bulbs each variety,
Value \$4.30, -----

Only **\$4.00**

Cut Flower Daffodils

Collection No. 20-D

An attractive collection for those wishing an inexpensive daffodil planting for cut flowers. It includes many types selected for a long blooming period.

ACTAEA	HADES
CARLTON	KING ALFRED
CHEERFULNESS	SHOT SILK
ODORUS	SCARLET
CAMPERNELLI	ELEGANCE
SONIA	WINTER PRIDE

3 each, 30 bulbs
(Cat. Value \$4.95) -- \$ 4.25

12 each, 144 bulbs
(Cat. Value \$18.75) -- 17.25

50 each, 500 bulbs
(Cat. Value \$65.50) -- 55.00

Outstanding Daffodil Collection

No. 21-D

A fine selection of outstanding daffodil varieties, including many types both early and late. These will give you a bulb garden you will be proud of.

ACTAEA	THALIA
BEERSHEBA	GOLDEN
WM. MENGELBERG	PERFECTION
CAROLINA	SCARLET
GERANIUM	ELEGANCE
MRS. R. O. BACKHOUSE	SONIA
TEXAS	PRES. LEBRUN

1 each, 12 bulbs
(Cat. Value \$ 3.05) -- \$ 2.75

3 each, 36 bulbs
(Cat. Value \$8.25) -- 7.50

12 each, 144 bulbs
(Cat. Value \$29.50) -- 27.50

50 each, 600 bulbs
(Cat. Value \$117.85) -- 100.00