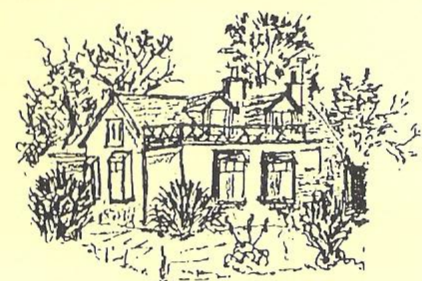


DB 00

*STEVE HOLDEN
DAFFODILS*

2000



*Sunny Corner
Copse Lane
Walberton
Arundel
West Sussex
BN18 0QH*

Telephone & Fax : 01243 542070

*Steve Holden Daffodils, Sunny Corner, Cope Lane, Walberton, Arundel, West Sussex, BN18 0QH
Telephone & Fax : 01243 542070*

Introduction

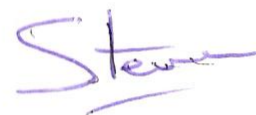
We thoroughly enjoyed our first year in the 'daffodil business' and are very pleased to release this, our second catalogue. I'm pleased to say that there is much, much more in this year's catalogue including;

- ❖ Around 80 new cultivars
- ❖ A new introduction, Shropshire Lass

The addition of the new cultivars is a result of us purchasing the majority of Clive Postles stock now that he has decided to wind down his business. Clive has been a tremendous help to me since I've been growing and showing. I am therefore delighted to be able to sell the wonderful cultivars that he has introduced over the years, along with many of John Lea's introductions which still hold their own on the show bench.

Shropshire Lass comes courtesy of Frank Verge who you may know is also the breeder of 'Fiona McKillop'. Frank has several other 'offerings' that I hope to persuade him to release for sale in future years !

Yours in daffodils



Steve Holden

The drawing on the cover comes courtesy of my good friend Tom Handley.

For your information

Terms of business

- ◇ All bulbs are offered subject to crop being satisfactory and being unsold at the time of receipt of the order.
- ◇ Orders will not be acknowledged unless specially requested.
- ◇ Many stocks are small so please order no later than mid July as orders are processed in strict rotation.
- ◇ Customers are asked to provide payment with the order, cheques only for postal orders.
- ◇ All bulbs travel at the customers risk and expense.

Postage and Packing

If paying in a foreign currency or international money order please add £6.00 to the postage and packing costs shown below. Postage and packing charges include an element of cost for health certificates.

MAFF no: UK/EW 37537

U.K. -		USA & Canada -	
1 to 3 bulbs	£1.75	Up to 5 bulbs	£10.00
4 to 5 bulbs	£3.50	For each additional bulb	£1.00
6 to 12 bulbs	£4.25		
13 to 25 bulbs	£5.50	Europe E.E.C. -	
26 to 35 bulbs	£7.00	1-10 bulbs	£6.00
For each additional 10 bulbs or part	£1.00	11-15 bulbs	£12.00
		For each additional bulb	£0.50
Republic of Ireland		Europe non E.E.C. -	
Add £2.75 to U.K. prices		1-10 bulbs	£6.00
Japan, Australia and New Zealand -		11-15 bulbs	£15.00
Up to 10 bulbs	£13.00	For each additional bulb	£0.50
For each additional bulb	£1.00		

Quality Assurance

- ◇ In order to supply you with the best quality bulbs that we can all of our stock will be sprayed regularly with fungicide during the growing season and any diseased plants will be removed. In addition, the stocks will be inspected by MAFF.
- ◇ All bulbs are hot water treated before they are replanted.

DIVISION 1

TRUMPET DAFFODILS

Apple Honey	1 W-Y Mid	Postles	An excellent bi-colour. The corona has clear division 1 proportions and is of unfading lemon yellow. The broad perianth opens hooded but easily dresses back <i>Panache x Lea 3-45-76 (no: 1-38a-82)</i>	£12.50
Beaulieu	1 Y-Y Mid	Postles	Large and smooth deep yellow perianth, outstanding quality. Rapidly increasing bulbs, good neck, tall stems. <i>Midas Touch x Gold Convention (no: 12-65-83)</i>	£17.50
Castle Howard	1 W-W Mid	Postles	Immaculate large white trumpet. Large smooth white perianth and a graceful tubular trumpet. Long stem and perfect poise. Very, very consistent. <i>Lea seedling x Ben Avon (no: 1-23a-82)</i>	£8.00
Kingham	1 Y-Y Mid	Postles	A fine yellow trumpet with large deep yellow perianth which forms a complete double triangle made of smooth broad petals. The trumpet gently expands from the base and has a neat half roll at the mouth which deepens to almost orange. Strong grower, fine in pots. <i>Golden Vale x Camelot (no: 1-17-76)</i>	£8.00
Nightflight	1 W-W Mid	Postles	Huge flowers of excellent quality. Broad perianth with good substance, slender trumpet, flaring at the mouth and of perfect proportion. <i>1-4-58-73 x Panache (no: 1-17a-82)</i>	£22.50
Ombersley	1 Y-Y Early-mid	Postles	Very large yellow trumpet with rounded very smooth deep yellow perianth. Excellent size and consistency. Large, healthy bulbs with strong stems. <i>Gold Convention x Midas Touch (no: 1-7-81)</i>	£12.50

Ben Align	1 W-W Mid	Lea	Remarkably smooth large perianth, well overlapping and smooth. The trumpet has a half roll to the mouth, opens pale yellow with pinkish tones and fades to a lovely milky white. Sister seedling to Silver Convention. (<i>Passionale x Pose Royale</i>) x (<i>Seedling x Rose Royale</i>)	£2 50
Burntollet	1 W-W Mid	Lea	Lovely smooth, pure white flower, petals tend to hood slightly but are easily pressed back to remain perfectly flat. Nicely flanged trumpet <i>Glenchesk x Empress of Ireland</i>	£3 50
Corbiere	1 Y-YOO Mid	Lea	Large round perianth similar in shape and size to Gold Convention. Dark yellow, straight sided and slightly flared trumpet turns a nice shade of orange as the flower develops. Tall stem and good neck, sun proof <i>Gold Convention x Glenfarclas</i> (no. 1-13-77)	£4 00
Camden	1 W-P Mid	Jackson	Broad smooth perianth of greenish white with a delicate pink trumpet with a slight frill and yellow eye. <i>Seedling x Ferran</i>	£5 00 or 3 for £13 00
Compute	1 W-Y	Jackson	A very large smooth bi-colour with a very long and bright yellow trumpet <i>Lenz x Helsal</i>	£10 00 or 3 for £25 00
Dabster	1 W-Y Early	Jackson	A lovely bi-colour from Tasmania <i>Seedling x Lod.</i>	£7 50 or 3 for £20 00
Dispatch Box	1 Y-Y Early-mid	Duncan	Large golden yellow flower, broad perianth of good substance and texture with a long cylindrical trumpet. Strong tall plant. <i>Golden Jewel x Midas Touch</i>	£8 00 or 3 for £21 00

Elmbridge	1 W-Y Mid	Lea	The first of several bi-coloured trumpets raised by the late John Lea. A vigorous plant with broad blue-green foliage and strong stems. Large perianth and deep yellow unfading trumpet with little staining <i>1-29-71 x Owston Wood</i> (no. 1.1-20-77)	£4 00
Empress Of Ireland	1 W-W Early-mid	Wilson	Lovely white trumpet with wonderful form and substance. Broad perianth. Strong stems. <i>Guardian x Kanchenjunga</i>	£2 50
Filoli	1 Y-P Late	Lea	An unusual and outstanding flower which has the appearance of a large cup while measuring division 1. Very broad and smooth primrose yellow perianth of good substance with a soft pink funnel shaped trumpet. Strong plant. <i>Navarro seedling x Pol Foulm</i> (no. 2-23-80)	£6 00
Gin & Lime	1 Y-W Early-mid	Carncairn	Very large flower of excellent quality with a good record on the show bench <i>Goldcourt x Moonstruck</i>	£3 00 or 3 for £8 00
Hacienda	1 Y-YOO Mid	Evans	Medium sized flower with reddish orange trumpet. <i>Artic Gold x Brer Fox</i>	£7 50 or 3 for £20 00
Hanley Swan	1 W-W Early	Lea	Another very white flower with well overlapping perianth that remain graceful in spite of the flowers ample proportions. Tall and strong with flowers held at a good angle. <i>Panache x 1-11-71</i> (no. 1.1-11-76)	£4 00
Hero	1 Y-O Early-mid	Jefferson Brown	Smooth, slightly inflexed perianth, bright mid orange trumpet. Large flower, excellent plant and bulb. <i>Seedling x Brer Fox</i>	£8 00 or 3 for £21 00
Kings Bridge	1 Y-Y Early-mid	Duncan	Lovely deep golden flower, consistent with good stem and poise. Good bulbs. <i>Kingscourt x Banbridge</i>	£2 50

Knightsbridge	1 Y-O Early	Lea	An trumpet of deep gold. Very smooth perianth segments which form a complete double triangle. The gently expanding trumpet is a darker shade of yellow than the perianth deepening to a nice orange shade as the flower ages. <i>Ballindalloch x Glen Clova (1-7-78)</i>	£4 00
Midas Touch	1 Y-Y Early-mid	Bloomer	Deep polished gold, broad overlapping perianth which are flat and smooth. Strong stems and good breeder. <i>Probably Camelot x Arctic Gold</i>	£5 00
Neahkanie	1 W-W Mid	Evans	Similar to Empress of Ireland <i>Vigil x Empress of Ireland</i>	£5.00 or 3 for £13.00
Predator	1 W-Y Mid	Jackson	A bi-colour with a narrow, smooth, bright greenish yellow trumpet with a flared mouth <i>Lenz x Helsal</i>	£4 00 or 3 for £10 00
Silent Valley	1 W-GWW Mid	Bloomer	Snow white petals, lovely texture and a long slender trumpet. A show flower of excellent quality. <i>Rashee x Empress of Ireland</i>	£4 00
Silver Convention	1 W-W Mid	Lea	A fine white trumpet. Smooth slightly reflexing perianth petals which are broad and overlapping and a milky white trumpet. A strong plant with good stem and neck. <i>(Passionale x Rose Royale) x Seedling x Rose Royale)</i>	£3 50
Theorum	1 W-Y Early-mid	Jackson	Smooth perianth, long narrow lemon-yellow trumpet. From Australia <i>Seedling x Helsal</i>	£6 00 or 3 for £16 00
White Convention	1 W-GWW Mid	Lea	A very beautiful flower that has very broad petals rounded at the tips making a nearly circular perianth similar to Gold Convention. The whole flower is lovely white with a green eye. This seedling was the last to be named and registered by the late John Lea. <i>Pitchroy x Panache (no. 4-58-73)</i>	£4 00

York Minster	1 Y-YOO Mid	Lea	Another milestone is John Lea's search for red trumpets. Lark dark yellow perianth which is of superior form and substance and is very smooth. The trumpet is a nice shade of deep orange red. <i>Glenfarclas x seedling</i>	£4 00
---------------------	----------------	-----	---	-------

DIVISION 2

LARGE CUPPED DAFFODILS

Broadway Village	2 Y-YRR Early	Postles	Very colourful flower, smooth flat broad perianths and a bright red cup that gives the flower a fiery effect. <i>Stourbridge x Torridon (no. 7-42-75)</i>	£2 50
Buttermere Lake	2 W-Y Mid	Postles	Large double triangle shaped perianth of heavy substance. Butter yellow corona that does not fade. Robust grower. <i>1-17-74 x Irish Mist (no. 1-137-79)</i>	£4 00
Caithness	2 Y-Y Mid	Postles	Gold throughout and of outstanding form and quality. Broad overlapping perianths, smooth and flawless. Three quarter length straight sided cup, fluted and serrated at the mouth. Medium size flower. <i>Golden Jewel x Golden Aura (no. 4-64-80)</i>	£3 50
Chateau Impney	2 Y-O Early	Postles	Almost every flower reaches show quality. Dark yellow perianth is flat and smooth. Half length cup is solid dark orange. Tall, good neck and poise. Sun proof. <i>2-25-69 x Lea seedling (no. 1-71-80)</i>	£3 50
Chelsea Girl	2 W-P Mid	Postles	Large, slightly relaxed, pointed perianth petals give a distinctive appearance. Corona is a delightful shade of pink with deeper lilac tones inside. Quite 'early' for a pink. <i>Rose Royale x Dailmanach (no. 1-49-76)</i>	£3 50

Steve Holden Daffodils, Sunny Corner, Copse Lane, Walberton, Arundel, West Sussex, BN18 0QH
Telephone & Fax : 01243 542070

China Doll	2 W-P Late	Postles	Sparkling white perianth that is broad overlapping and full of substance. The large cup expands gently to a distinct pink rim. A truly beautiful flower. <i>Lea seedling x Dailmanach</i>	£5.00
Claverley	2 W-P Late	Postles	Very strong, straight stem and all the good points of its parent Dailmanach. Broad, smooth perianth forming two perfect triangles. Large bowl shaped cup. <i>Dailmanach OP</i>	£5.00
Corky's Song	2 W-Y Mid	Postles	Named after my late father, the corona is deep un-fading yellow, sparkling white perianths, smooth and rounded. Prolific flowering plant. <i>17-74 x 12-77 (no: 2-53a-83)</i>	£5.00
Cultured Pearl	2 W-W Late	Postles	Perianth is of medium size, smooth and flat and the creamy cup soon changes to a beautiful white. Very late flowering. <i>Pitchroy x Misty Glen (no. 1-30-76)</i>	£1.50
Desert Storm	2 Y-R Early	Postles	Early flower of outstanding colour and form. Deep yellow perianth, very overlapping. Straight sided half length cup of deepest orange/red has slight serration at the mouth. <i>Torridon x Loch Hope (no. 1-77-79)</i>	£5.00
Eastern Promise	2 W-P Mid	Postles	Large flower with brilliant white perianth of lovely quality. Corona opens with a broad band of reddish pink and as the flower develops this intense pink spreads through the corona creating a spectacular sight. Excellent grown in pots. <i>Lea seedling x Dailmanach (no. 2-8-76)</i>	£6.00
Fire Blade	2 Y-YYO Mid	Postles	Excellent colour and form, large butter yellow perianth, broad and smooth. Bright orange band around the almost even unbroken rim. Perfect poise. <i>1-54-76 x Gettysburg (no: 1-29-83)</i>	£20.00

Steve Holden Daffodils, Sunny Corner, Copse Lane, Walberton, Arundel, West Sussex, BN18 0QH
Telephone & Fax : 01243 542070

Hampton Court	2 Y-O Mid	Postles	The very broadly ovate perianth segments are of the deepest gold, flat and smooth forming a rounded flower of exceptional quality. The corona has neat serration and is solid orange/red to the base. This beautiful flower has the ability to breed red trumpets. <i>Seedling x Torridon (no. 1-94-80)</i>	£6.00
Hanbury	2 W-W Mid	Postles	Sparkling white flower of almost trumpet proportions and a perianth of outstanding quality being very smooth and rounded in shape. Healthy plant with long stems that hold the flower perfectly. <i>Ben Avon x Panache (no. 1-43-80)</i>	£8.00
Hidcote	2 Y-R Mid	Postles	Deep yellow perianth, very thick texture, flat and smooth. Deep solid red corona. Fine show flower. <i>Loch Lundie x 1. 2-27-74 (no: 2-12a-82)</i>	£5.00
Honeybourne	2 W-Y Mid	Postles	The colour code of W-Y is not at all accurate but there is currently no alternative. The unusual colour of its corona has caused much interest and this is backed by a superb snow white perianth which is large and very round. In all a marvellous flower which makes fine bulbs. <i>Cristobal x Pennine Way (no. 4-35-77)</i>	£20.00
Meissen	2 W-P Late	Postles	Very broad perianth that forms double triangle of amazing quality, long coral pink corona. Huge bulbs, fine plants, good for growing in pots. <i>Mrs Richmond seedling 283 x Dailmanach (no: 7-96-80)</i>	£8.00
Neon Light	2 W-YYO Mid	Postles	A luminous fiery orange coloured corona set against a brilliant white perianth. The perianth segments are very broad and smooth while the corona is bowl shaped and in perfect proportion. <i>Rubh Mor x Loch Brora (no. 1-41-84)</i>	£12.50

Royal China	2 W-WWP Mid	Postles	Beautiful colour and form, broad smooth brilliant white perianth, funnel shaped corona with a frilly lilac pink band. <i>1-51-77x 2-34-74 (no: 1-4-83)</i>	£22 00
Satin Doll	2 W-GYP Late	Postles	Very broad ovate petals, slightly incurving at the margins which are smooth and very white. The funnel shaped cup is green at the base, shading to pale yellow with a clearly defined pink band. Perfect poise. <i>Rainbow x Dailmanach (1-51-77)</i>	£5 00
Severn Valley	2 W-WYY Mid	Postles	Very large flower of impeccable quality. Corona opens white and changes to biscuit yellow for most of its length. Great flower for collections. <i>Inverpolly x Misty Glen (no: 1-62-79)</i>	£18 00
Watership Down	2 W-W Early	Postles	A large, very white flower of exemplary form. An early flowering cultivar on a very healthy plant. Quite simply a cut and show bloom. <i>Burntollet x Canisp (no. 1-50-76)</i>	£3.50
White Tea	2 W-W Mid	Postles	Listed by Clive Postles for the first time in 1999. Sparkling white and of superb form. Extremely consistent. <i>Croila x White Convention (no. 4-18a-82)</i>	£8 00
Aberfoyle	2 Y-O Early	Lea	Consistent and very early with deep yellow, very broad and overlapping perianth. The corona is orange at the base deepening to red. <i>Loch Loyal x Loch Luidie</i>	£3.50
Areley Kings	2 W-GWW Mid	Lea	A dazzling white flower of remarkable consistency and form. The flower is in perfect balance and carried on tall stems. <i>Misty Glen x Croila (no. 1-32-76)</i>	£2.50

Bandit	2 W-YOO Mid	Brogden	A popular exhibition flower in New Zealand. Broad smooth perianth. Lemon yellow corona with creamy yellow at base and rich yellow at rim. <i>Kowhiri x Green Island</i>	£3 00
Beach Party	2 W-GWP Mid	Duncan	Pure white ace of spades perianth, slightly reflexed. Clearly defined green, white and pink cup. Vigorous plant. <i>Pismo Beach x High Society</i>	£5 00 or 3 for £13 00
Bryanston	2 Y-Y Early	Blanchard	Early and consistent with smooth, wide petals of good substance. Tall strong plant. <i>Ormeau x St Keverne</i>	£3 50
Carson Pass	2 W-WWP Mid-late	Duncan	Very smooth, large flower with a shallow bowl cup which is neatly rimmed with shell pink. A grey/green eye. Sun proof. <i>Pismo Beach x High Society</i>	£4 00 or 3 for £10 00
Charlbury	2 W-Y Mid	Lea	Very large flower of great substance, forming two compete triangles. Bright yellow corona, just short of trumpet measurement with a delightful roll at the mouth. Tall stem, perfect poise. <i>1.1-29-71 x Owston Wood (no. 1.5-20-77)</i>	£5 00
Cheltenham	2 Y-YOO Early	Lea	Mid yellow perianth is broad and well overlapping of heavy substance. Nicely balanced bright orange cup is slightly expanding with neat serrations. <i>1-24-71 x 1-9-71 (no. 1.7-3-78)</i>	£2 50
Compassion	2 W-P Mid	Lea	Similar to Pol Voulin except that the corona is almost trumpet length. Fine show flower with a good neck. <i>1-40-67 x Dailmanach</i>	£8 00
Craig Stiel	2 Y-R Mid	Lea	Orange flushes through the deep yellow perianth. The form and texture is lovely and the half length, straight sided cup is of deepest red. Medium sized on tall strong stems. <i>Bunclody x Torridon (no. 1-52-73)</i>	£1.50

Steve Holden Daffodils, Sunny Corner, Copse Lane, Walberton, Arundel, West Sussex, BN18 0QH.
Telephone & Fax : 01243 542070

Creag Dubh	2 O-R Mid	Lea	One of the darkest and best in this class. Deep coppery orange-red perianth and deep red cup. Tall stem and lovely pose. (<i>Chungking x Spry</i>) x <i>Home Fires</i>) x <i>Vulcan</i>	£4.00
Dailmanach	2 W-P Mid	Lea	Superb pink with glistening white perianth that is smooth and flat. Three quarter length cup is clear bright pink and deeper pink at the mouth. Strong and consistent. <i>Inverpolly x Seedling</i>	£3.50
Gold Convention	2 Y-Y Mid	Lea	Wonderful flower with a nearly round flat perianth formed from intensely broad smooth petals, well rounded at the tip. Rather narrow trumpet of rich gold which has a neatly serrated mouth. Tall stem and good neck. Very consistent. <i>Un-named seedlings (no. 1-32-68)</i>	£7.50
Golden joy	2 Y-Y Mid	Bloomer	Deep gold, smooth broad petals and a lovely round perianth. Good proportion, a good bulb and a really good parent. <i>Camelot x Artic Gold</i>	£2.50
Kebaya	2 W-YY Late	Duncan	Flat, smooth and rounded perianth and a small deep yellow cup with a clear rim of reddish pink. Strong stems and good neck. <i>Pismo Beach x High Society</i>	£2.50 or 3 for £6.00
La Vella	2 Y-R Mid/late	Duncan	Consistent with neat, precise form. Flat, broad spade shaped petals of deep golden yellow. Mildly fluted trumpet of deep orange red. <i>Bunclody OP</i>	£3.00 or 3 for £8.00
Lemon Brook	2 YYW-W Mid-late	Mitsch	A striking consistent show flower with a cup that matures to pure white. The broad spade shaped perianth is deep lemon yellow. <i>Euphony OP</i>	£4.00 or 3 for £10.00

Steve Holden Daffodils, Sunny Corner, Copse Lane, Walberton, Arundel, West Sussex, BN18 0QH.
Telephone & Fax : 01243 542070

Liverpool Festival	2 Y-O Late	Lea	A very fine, quite large flower which is surprisingly late for this division. The flat very smooth perianth of golden yellow is well overlapping and the bright orange cup is practically sun-proof. Good, rapidly increasing bulbs. <i>Vulcan x (Tanera x Sheildaig)</i>	£3.50
Loch Achray	2 Y-ORR Early	Lea	This flower has the smoothness of Loch Carron combined with the colour and vigour of Loch Loyal. The deep yellow perianth is large, smooth and well overlapping. The medium length cup is deep fiery red and has a neatly serrated expanding rim. <i>Loch Loyal x Loch Carron (no. 1-4-3-78)</i>	£3.50
Loch Carron	2 Y-R Early-Mid	Lea	A beautifully smooth flower that consistently produces show quality flowers. The smooth flat perianth borders on orange and the cup is fiery red to the base. <i>(Capitol Hill x Vulcan) x (Capitol Hill x Vulcan)</i>	£3.50
Loch Leven	2 O-ORR Mid	Lea	A flower of outstanding colour and form. The smooth broadly ovate perianth is of a rich orange. The tall plant is consistent and the bulbs increase extraordinarily well. <i>Creag Dubh x 1.1-26-73 (no. 1.1-11-78)</i>	£3.50
Loch Lundie	2 Y-R Early-Mid	Lea	A very consistent flower. The petals are broad and overlapping, rounded at the tip and the edges slightly incurved to form a smooth perianth of butter yellow. The corona is bright red and the flower is carried with great poise. <i>Un-named seedlings.</i>	£2.50
Magna Carta	2 W-O Early-mid	Duncan	Good consistent flower of pure white. Flat perianth, good stem and poise. <i>Arctic Flame OP or Spring Magic OP</i>	£3.00 or 3 for £8.00

Steve Holden Daffodils, Sunny Corner, Copse Lane, Walberton, Arundel, West Sussex, BN18 0QH.
Telephone & Fax : 01243 542070

Mentor	2 W-GPP Mid-late	Bloomer	Excellent large, flat, round perianth of good substance & texture. Medium sized cup of deep pink and a good stem. <i>Passionale x (Interim x Rose Caprice)</i>	£3.00 or 3 for £8.00
Mount Fuji	2 W-W Mid-late	Duncan	A large round flower with a goblet shaped cup. Strong, tall plant. <i>Easter Moon x Silent Valley</i>	£3.50 or 3 for £9.00
Mowana	2 W-GPP Mid-late	Duncan	Unusual, sun proof reddish pink corona with a deep green eye. Good sturdy plant and good increaser. <i>Gem of Ulster x Fragrant Rose</i>	£6.00
New Dawn	2 Y-P Late	Lea	A quality flower with fine contrast between the pastel pink corona and the soft yellow perianth. The perianth segments are smooth and broadly ovate, forming a rounded flower. Very healthy plant with tall stems. <i>1.1-18-76 x 1.1-13-75 (no. 1.1-49-80)</i>	£6.50
North Rim	2 W-GYP Mid-late	Duncan	Bright and beautiful flower. Round incurving perianth segments of pure white and a bowl cup rimmed in rich reddish pink. <i>High Society x Fragrant Rose</i>	£3.00 or 3 for £8.00
Obsession	2 W-P Mid	Jackson	One of the best and most consistent of the Tasmanian pinks. Very round perianth with a deep pastel pink cup, neatly serrated at the edge. <i>Verran x Cathlin</i>	£3.00 or 3 for £8.00
Osmington	2 W-R Mid	Blanchard	Medium sized flower with smooth, broad white petals that join a bright red cup. Strong plant. <i>Seedling x (Kilworth x Arbar)</i>	£2.50
Pol Crocan	2 W-P Mid	Lea	A "pink" in the best Lea tradition, having Dailmanach in the breeding of one side and Inverpolly on the other. The rounded, very white perianth is large and well overlapping. <i>2-19-69 x 29-73 (no. 1-45-77)</i>	£4.00

Steve Holden Daffodils, Sunny Corner, Copse Lane, Walberton, Arundel, West Sussex, BN18 0QH.
Telephone & Fax : 01243 542070

Pol Dornie	2 W-P Late	Lea	A very deep pink corona which contrasts beautifully with the pure white perianth. The whole flower is carried by a strong stem and neck. <i>Kildavin x Nav seedling</i>	£5.00
Pol Voulin	2 W-P Late	Lea	A large flower with beautifully formed perianth of pure white and great substance. The large flat perianth makes a perfect foil for the bright clear china pink cup. <i>Pol Dornie x Dailmanach (no. 2-14-74)</i>	£6.50
Quasar	2 W-PRR Mid	Evans	One of the best in its class, broad, pure white perianth, smooth and heavy in substance. A deep water melon pink cup. <i>Cordial x Precedent</i>	£5.00 or 3 for £13.00
Red Spartan	2 Y-R Late	Duncan	Good yellow red for late season shows. Deep golden ace of spades perianth and bowl shaped cup. Good stem and neck. <i>Richill x Bunclody</i>	£3.00 or 3 for £7.50
Reference Point	2 YW-Y Mid	Lea	A most beautiful and distinct coloured flower that combines an unusual colour combination with superb form. The mid yellow perianth has a white hallow and the three quarter length cup is of the same delightful yellow. Very consistent. <i>Daydream x Creag Dubh (no. 1-18-76)</i>	£2.50
Regal Bliss	2 W-GWW Mid	Duncan	Nicely proportioned with flat very smooth perianth and a cylindrical cup which is slightly expanded at the mouth. <i>Easter Moon x Knowehead</i>	£2.50 or 3 for £6.00
Ringleader	2 W-YYR Mid-late	Richardson	Lovely pure white overlapping petals of good substance. Deep lemon yellow cup with band of fiery red around the edge. <i>Kilworth x Arbar</i>	£3.00

Royal Marine	2 W-YOO Mid	Lea	The flower is large, full of substance, colour and vitality. The ovate perianth segments are well overlapping and very smooth. The cup is yellow at the base then changes to brightest orange-red for two thirds of its length. <i>1-27-67 x Ibberton (no. 1-20-75)</i>	£3.50
Shaz	2 W-R Mid-late	Brogden	A good exhibition record in New Zealand <i>Centrefold x ?</i>	£4.00
Silk Cut	2 W-GWW Mid	Duncan	Lovely precise form and polished finish. A narrow and slightly expanded cup which is whiter than the mildly reflexed perianth. <i>Easter Moon x Silent Valley</i>	£2.50 or 3 for £6.00
Society Belle	2 W-GYP Late	Duncan	Lovely rounded flower with broad, ovate perianths of pure white. Funnel, mildly flared cup with a cherry pink rim. <i>High Society x Fragrant Rose</i>	£3.00 or 3 for £7.50
Songket	2 W-GYP Late	Duncan	Pure, glistening white perianth which are broadly ovate with a slight point. Well proportioned funnel cup, emerald eye and a rim of apple blossom pink. <i>Pismo Beach x High Society</i>	£3.00 or 3 for £7.50
Special Envoy	2 Y-Y Early	Lea	This deep yellow flower is very smooth and of superb form. The almost trumpet length cup is of the same deep yellow and expands gently to a nice serrated flange at the mouth. The flower is carried perfectly on tall stems. <i>Gold Convention x Meldrum (no.8-21-78)</i>	£3.50
Sportsman	2 Y-R Mid	Duncan	One of the deepest coloured flowers in its class. Rounded flower with well proportioned bowl shaped cup. Tall strong stem. Good pose. <i>Ceylon x Battle Cry</i>	£2.50 or 3 for £6.00

State Express	2 Y-GOO Late	Duncan	Another late flowering yellow red, even larger than Red Spartan. Attractive, consistent and like Red Spartan, has good resistance to burning. <i>Richill x Bunclody</i>	£3.00
Surrey	2 Y-R Mid-late	Duncan	Intense colour with beautifully smooth perianth. Good stem and neck. <i>Shining light x Torridon</i>	£6.00
Sweet Georgia	2 W-GPP Late	Lea	A flower in the best Lea tradition. The perianth is very round, brilliant white and full of substance. The cup is an intense deep pink, green at the base gradually expanding to a very slightly serrated quarter roll. Superb flower for the show bench. <i>Dailmanach x 1.1-40-67 (no.1.1-13-75)</i>	£6.50
Wychavon	2 W-YRR Mid	Lea	The brilliant white almost round perianth is the perfect background for the deep red fluted and slightly serrated cup that is almost sun-proof. The tall stem has an unusually short neck and the flower is very consistent. <i>Ohio x Rockall seedling</i>	£3.50
Yoshiko	2 W-P Mid-late	Duncan	A very large flower of lovely quality. Broad white perianth and a deep rose pink cup. Good pose and excellent plant. <i>Gracious Lady x (Infatuation x Gem of Antrim)</i>	£5.00 or 3 for £13.00
Zion Canyon	2 W-GYP Late	Duncan	A large flower of good consistency. Wide spreading double triangle and slightly reflexed perianth. Long trumpet shaped cup and with lilac pink rim. <i>Pismo Beach x High Society</i>	£7.50 or 3 for £18.00

DIVISION 3

SMALL CUPPED DAFFODILS

Birchwood	3 W-GWW Late	Postles	Graceful flower almost completely round with broad overlapping segments. Small white bowl shaped cup has a dark green base. Very white, consistent. <i>Monksilver x Snowcrest</i>	£3.50
Carole Lombard	3 W-YYO Late	Postles	Large well formed perianth of excellent quality, small goblet shaped cup has a fluted slightly serrated band of luminous orange at the mouth. <i>Purbeck x Estrella (no. 2-64-79)</i>	£4.00
Heslington	3 W-GYR Late	Postles	A very attractive flower by any standard. A smooth overlapping perianth which has delicately pointed tips giving a very pleasing appearance to the flower. The small cup has a serrated edge of bright red. Very consistent. <i>Accolade x Aircastle (no. 1-8-74)</i>	£2.50
Magic Moments	3 Y-YYO Mid	Postles	A jewel like flower in both form and colour. The medium sized butter yellow round perianth is quite flawless. The bowl shaped cup has a most distinct bright orange rim and is clearly non-predominant. Stems are strong and tall with good poise and the cultivar is excellent for pot culture. <i>Achuart x Ferndown (no. 3-22-79)</i>	£4.00
Moon Shadow	3 W-GYY Mid	Postles	A very large flower of impeccable show form that opens a pale cream, then soon whitens without and loss of colour from the cup which is a flat disc of bright citron yellow. Tall stem, perfect poise, full of substance and completely sun-proof. <i>Golden Eye x L2-4-69 (no. 3-78-69)</i>	£10.00
Netherwood Marsh	3 W-W Late	Postles	Brilliant white perianth, flawless in form. A pale yellow bowl shaped corona. Flower needs shading to prevent burning. A good show flower. Large bulbs. <i>Cool Crystal x L2-4-69 (no. 7-52-79)</i>	£4.00

Samsara	3 Y-YRR Mid	Posiles	Perianth quality is exemplary being broad, smooth and of mid-yellow colour. The very small cup shaped corona is solid red with yellow at the base. Very consistent. <i>Achduart x Stanway (no. 2-43-82)</i>	£8.00
Shropshire Lass	3 W-GYR	Verge	A consistently well formed flower with a pure white perianth and a deep yellow corona that finishes with a thin crimson band around the lip. A very attractive flower. <i>Mahould x Aircastle</i>	£25.00
Silkwood	3 W-GWW Late	Postles	Very large flower of brilliant white and lovely quality. Cream upon opening and whitens as the flower grows. Very tall stems with lovely poise, extremely consistent. <i>Cool Crystal x L2-4-69 (no. 2-52-79)</i>	£4.00
Arizona Sunset	3 Y-R Late	Duncan	Great depth of colour in the cup and perianth and very smooth perianth. Good stem and poise. <i>(Richill x Bunclody) x (Altruist x Ulster Bank)</i>	£6.00
Bossa Nova	3 O-R Mid	Duncan	Large, smooth flower with flat orange perianth and a small red cup. Good stem and neck. <i>Altruist x Ulster Bank</i>	£3.00 or 3 for £7.50
Dunley Hall	3 W-Y Late	Lea	Large round brilliant white perianth with a small citron yellow cup and green eye. <i>Loch Assynt x 68 15A (no. 4-37-76)</i>	£4.00
Evesham	3 W-GYY Mid	Lea	Similar to its sister seedling Dunley Hall with a slightly paler cup, taller stems and flowering a little earlier. A very good cultivar. <i>Loch Assynt x 68 15A</i>	£4.00
Glen Alladale	3 W-WYO Late	Lea	A stylish flower with an almost flat, disc shaped corona that has a perfect bright orange/red rim. Sparkling white perianth is very smooth and almost round in form. <i>(Rockall x Merlin) x (Loch Assynt x Achnasheen)</i>	£3.50

Hartlebury	3 W-R Late	Lea	A magnificent white and red flower that has a brilliant white well overlapping perianth and a small cup which is neatly serrated at the edge. Large bulbs which increase well. <i>68 15A x 2-4-69 (no. 2-4-69)</i>	£2 50
Lighthouse	3 W-R Mid-late	Duncan	Very consistent with large white, smooth, very round perianth. A deep red flat cup and a strong, round, tall stem <i>Avenger x Merlin</i>	£4 00 or 3 for £10.00
Loch Alsh	3 W-YYO Late	Lea	One of the largest roundest flowers seen on the show bench. The small yellow cup has a narrow band of orange. A sister seedling of Dunley Hall and a good show flower as one would expect from its pedigree. <i>68 15A x Loch Assynt (no. 2-37-76)</i>	£4 00
Loch Trool	3 W-YRR Late	Lea	A very attractive flower with broad pure white petals. A very consistent flower and good increaser. <i>Cairntoul x Purbeck (no. 1-21-74)</i>	£2 50
Mellon Park	3 W-O Mid-late	Bloomer	A lovely sunproof flower with broad pure white perianth of good substance and texture. Neat cleanly cut cup that changes from GYO to YOO through to bright orange. Tall strong stem. <i>(Irish Charm x R.202) x Royal Regiment</i>	£2 50 or 3 for £6 00
Mount Angel	3 W-YRR Mid-late	Duncan	Large, round, smooth flower. Very strong, tall stems. Pure white perianth and a small yellow cup with a narrow deep red band. <i>Merlin OP</i>	£2 50
Pzaz	3 Y-O Early-mid	Jackson	A very bright and high quality show flower Early to mid season. <i>Riis x Dimity</i>	£5.00
Royal Princess	3 W-WWO Mid-late	Abel-Smith	A delicate beauty with pure white perianth and a terracotta rim on the evenly frilled cup. <i>Mary Isobel x Seedling</i>	£3 00 or 3 for £8.00

Stanway	3 Y-R Late	Postles	Extremely consistent with a deep yellow 'ace of spades' perianth. The dark red short cup is just within the division 3 measurements. Lovely poise. <i>Achdu seedling x Pipe Major (no. 2-37-74)</i>	£3 00
Ulster Bank	3 Y-R Mid-late	Duncan	Wonderful deep golden yellow perianth which are of thick, waxy substance and overlapping. Very round with a clean cut fiery red cup. A good parent. <i>Carbineer x Air Marshall</i>	£4 00
Vernal Prince	3 W-GYY Mid-late	Bloomer	Large pure white perianth. The green eye enhances the deep lemon yellow cup. Good plant and bulb. <i>Shantallow x Woodland Prince</i>	£2 50
Warmington	3 W-W Late	Lea	Brilliant white smooth perianth. Small nicely serrated cup of the same brilliant white and a deep green base <i>Lea seedling no. 4-52-77</i>	£3 50
Wetherby	3 W-YRR Mid-late	Duncan	Lovely smooth texture and well proportioned form, held on a strong, tall stem. Very free flowering and fragrant. <i>Merlin x Silent Beauty</i>	£2 50

DIVISION 4

DOUBLE DAFFODILS

Crowndale	4 Y-O Mid	Postles	Probably the best form there is on a yellow double daffodil. Several rows of perfectly formed perianth petals of medium yellow and then a neat full centre of mixed yellow and bright orange petaloids. <i>Loch Lundie x Flying Colours (no. 4-16-82)</i>	£12.50
Flying colours	4 Y-Y Mid	Postles	An all yellow double that has both size and quality. Very full petaloid area is solid and well formed. Short neck and strong stem. Most flowers contain a stigma as an added bonus. <i>Strines x Tahiti (no. 3-57-76)</i>	£5 00

Malibu	4 Y-R Early	Postles	Several rows of bright yellow perianth segments, the outer row being slightly reflex, very smooth and overlapping. The dark red corona segments are evenly spaced, and very well formed. <i>Torridon x Tahiti (no. 3-9-80)</i>	£3 50
Alley Inn	4 W-P mid-late	Duncan	A lovely pink and white beautifully formed double. Flat and rigid pure white perianth. Strong weather resistant stem. <i>Pink Paradise x (Polonaise x Interim)</i>	£7 50 or 3 for £18 00
Baldock	4 Y-P Late	Hamilton	A lemon yellow and pink double, a good round six petal back and well proportioned coronal segments of a warm pink. Very fertile as a parent. <i>Cross unknown</i>	£5 00 or 3 for £13 00
Beauvallon	4 Y-R Late	Lloyd	Deep yellow and red, unusually neat and symmetrical. Good strong plant and neck. <i>Seedling x Tahiti</i>	£3 00 or 3 for £8 00
Claridges	4 W-P Late	Duncan	A lovely round, symmetrically backed pink double of well filled form and lovely texture. Consistent. <i>((Valaise x Debutante) x Polonaise) x (Polonaise x Violetta)</i>	£3 50 or 3 for £9 00
Delnashaugh	4 W-P Late	Lea	Broad flat perianth petals of good substance and rounded at the tip. The double inner segments are clear deep pink and evenly spaced. Carried perfectly on strong stem and neck, long lasting. <i>Kimbrace x Romance</i>	£2 00
Fulwell	4 W-R Mid-late	Duncan	Well defined broad white perianth with deep orange-red coronal segments. Good plant, stem and neck. <i>Monterrico x Doctor Hugh</i>	£2 50
Golden Bear	4 Y-Y Mid	Duncan	A deep golden yellow, large and well filled. Strong stems and foliage. <i>Smokey Bear x Sportsman</i>	£4 00 or 3 for £10 00

Grosvenor	4 W-P Late	Duncan	Good quality back perianth, full with deep pink colour, good form, size and consistency. <i>Pink Pageant x Replete</i>	£3 50 or 3 for £9 00
Swallow Hotel	4 W-YPP Mid-late	Duncan	A nice flat triangle back with tidy inner petaloids and coronal segments of pure white and peachy apricot pink. <i>Pink Pageant x High Society</i>	£2 50 or 3 for £6 00
Westbury	4 W-P Late	Duncan	Slightly smaller than some pink doubles with a very white perianth. Ruffled coronal segments in a delicate shade of lilac pink. Regular six petal silken smooth back. <i>((Valaise x Debutante) x Polonaise) x (Polonaise x Violetta)</i>	£3 50 or 3 for £9 00

DIVISION 5

TRIANDRUS DAFFODILS

Arish Mell	5 W-W Mid	Blanchard	One of the best flowers in the triandrus division. Very white with fine texture and two or three flowers on each stem. <i>Interim x N. triandrus var. loiseleurii</i>	£2 00
Tuesday's Child	5 W-Y Mid	Blanchard	Reflexing white perianth and long soft lemon crowns. <i>Interim x N. Triandrus var. Loiseleurii</i>	£2 00
Ice Wings	5 W-W Mid	Colman	Reflexed overlapping perianth of pure white. Two or three flowers per stem. <i>Ischia x n. triandrus</i>	£2 00
Jingle Bells	5 W-Y Mid-late	Pannill	Beautiful exhibition quality Mid to late season. <i>Fair Colleen x N. triandrus albus</i>	£5 00

DIVISION 6

CYCLAMINEUS DAFFODILS

Foundling	6 W-P Mid-late	Camcairn	Reflexing broad white petals and a deep rose pink crown <i>Camcairn</i>	£2 00
Bilbo	6 W-GPP Mid	Duncan	A bell shaped corona expanded at the rim. Pure white perianth segments, slightly waxed and reflexed. A very bright pink cup. A bit like Foundling but with whiter perianth. <i>Roseworthy x Foundling</i>	£2 00
Delta Wings	6 W-P Late	Duncan	Delicately formed tubular and slightly serrated crown of hot glowing pink. Long, narrow perianth which are smooth and slightly reflexed. <i>Seedling</i>	£2 00
Swing Wing	6 W-GPP Mid-late	Duncan	A dramatic swallow like flower with an intense pink cup with a deep green eye. Pure white reflexed petals <i>Roseworthy x Foundling</i>	£2 00
Tiger Moth	6 W-P Mid-late	Duncan	A narrow deep pink cup backed by a well reflexed perianth. Small, ideally proportioned flower and stem <i>6W-P seedling (OP)</i>	£2 00
Inca	6 Y-WWY Early	Mitsch	A reverse bicolour with reflexed greenish lemon perianth and a long straight trumpet which fades to white with a gold band. <i>Barlow (OP)</i>	£5 00
Tracey	6 W-W Mid-late	Verry	Beautifully formed cyclamineus with well reflexed perianth and full length trumpet which opens cream and fades to white <i>Assini x N cyclamineus</i>	£3 00
Trena	6 W-Y Early	Verry	Smooth pure white perianth with reflexed ace of spades petals and a deep yellow trumpet of perfect proportion <i>Assini x N cyclamineus</i>	£3 00

DIVISION 7

JONQUILLA DAFFODILS

Tripartite	7 Y-Y Late	Brook	An unusual flower which combines a split corona with the refined multi-flowered deep golden qualities of April Tears <i>April Tears x Baccarat</i>	£2 00
Sun Disc	7 Y-Y Mid-late	Gray	A little circle of gold with prominent petal points and a green eyed flat cup <i>N rupicola x N poeticus</i>	£0 50
Stratosphere	7 Y-Y Mid-late	Mitsch	A lovely show bloom of deep golden yellow <i>Aircastle x N Jonquilla</i>	£2 00

DIVISION 8

TAZETTA DAFFODILS

Highfield Beauty	8 Y-O Early	Mott	Beautifully smooth and rounded lemon yellow petalled flowers with orange cups. Two or three flowers on a stem. <i>Breeding unknown</i>	£2 50
-------------------------	----------------	------	---	-------

DIVISION 9

POETICUS DAFFODILS

Green Park	9 W-GGO Late	Ballydorn	Smoothest texture with perfectly flat perianth backing a predoinatly green cup with orange rim. <i>Moyle x Cushendun Seedling</i>	£8 00
Chesterton	9 W-GYR Late	Duncan	A tall vigorous rounded flower with slightly incurving perianth segments. A small saucer shaped cup which has a pale green base merging into lemon yellow mid zone and a narrow edged red band. <i>Cantabile x Milan</i>	£2 00